

FLOOR 3 SUITE 301

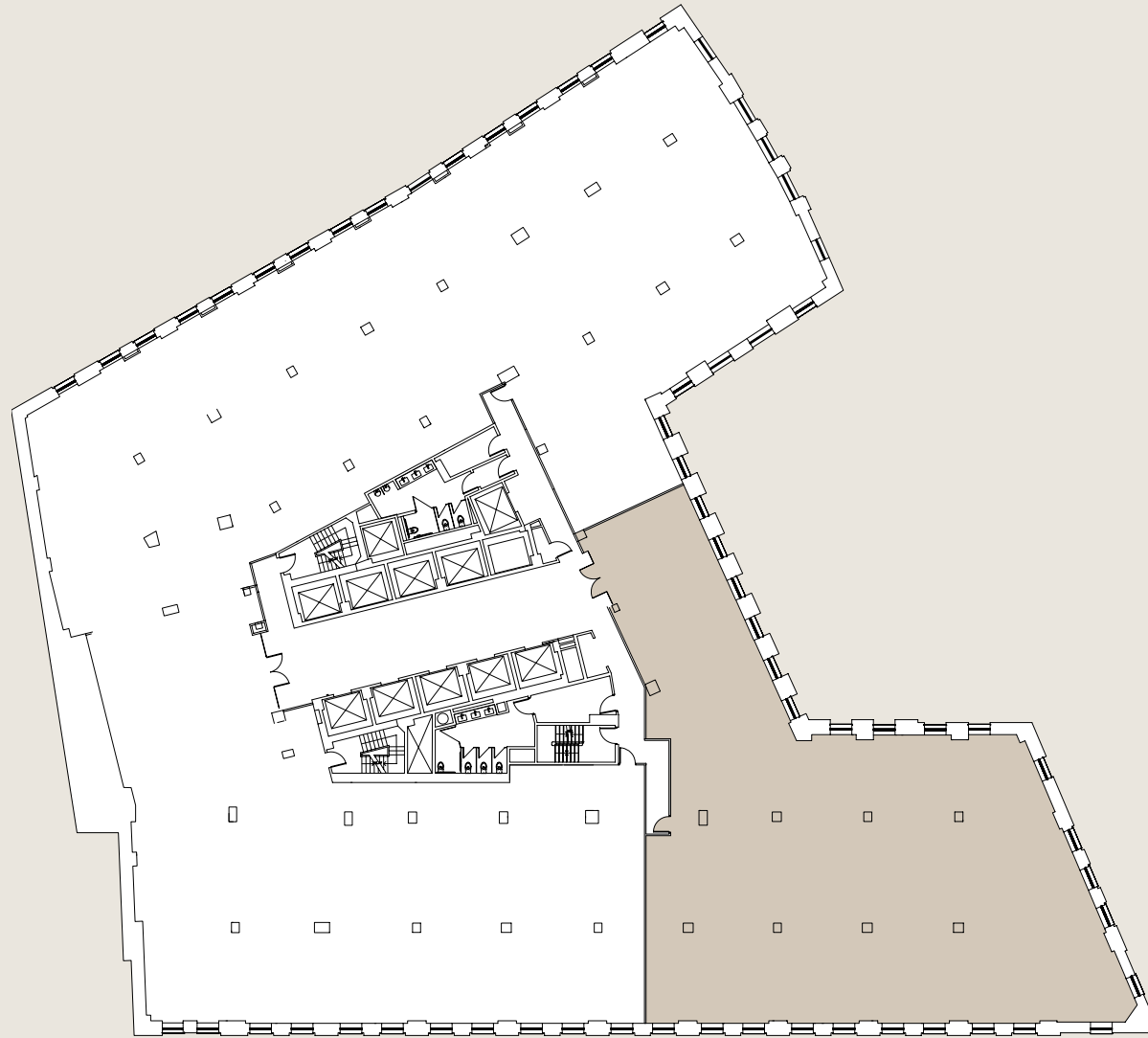
3,850 RSF

Thomas D. Ashe | +1 617 204 4112 | thomas.ashe@cushwake.com

Thomas O'Regan | +1 617 204 4160 | thomas.oregan@cushwake.com

Michael Joyce | +1 617 204 4102 | michael.joyce@cushwake.com

Devin Tringale | +1 617 204 4129 | devin.tringale@cushwake.com



FLOOR 4 SUITE 400

7,607 RSF

Thomas D. Ashe | +1 617 204 4112 | thomas.ashe@cushwake.com

Thomas O'Regan | +1 617 204 4160 | thomas.oregan@cushwake.com

Michael Joyce | +1 617 204 4102 | michael.joyce@cushwake.com

Devin Tringale | +1 617 204 4129 | devin.tringale@cushwake.com



FLOOR 21

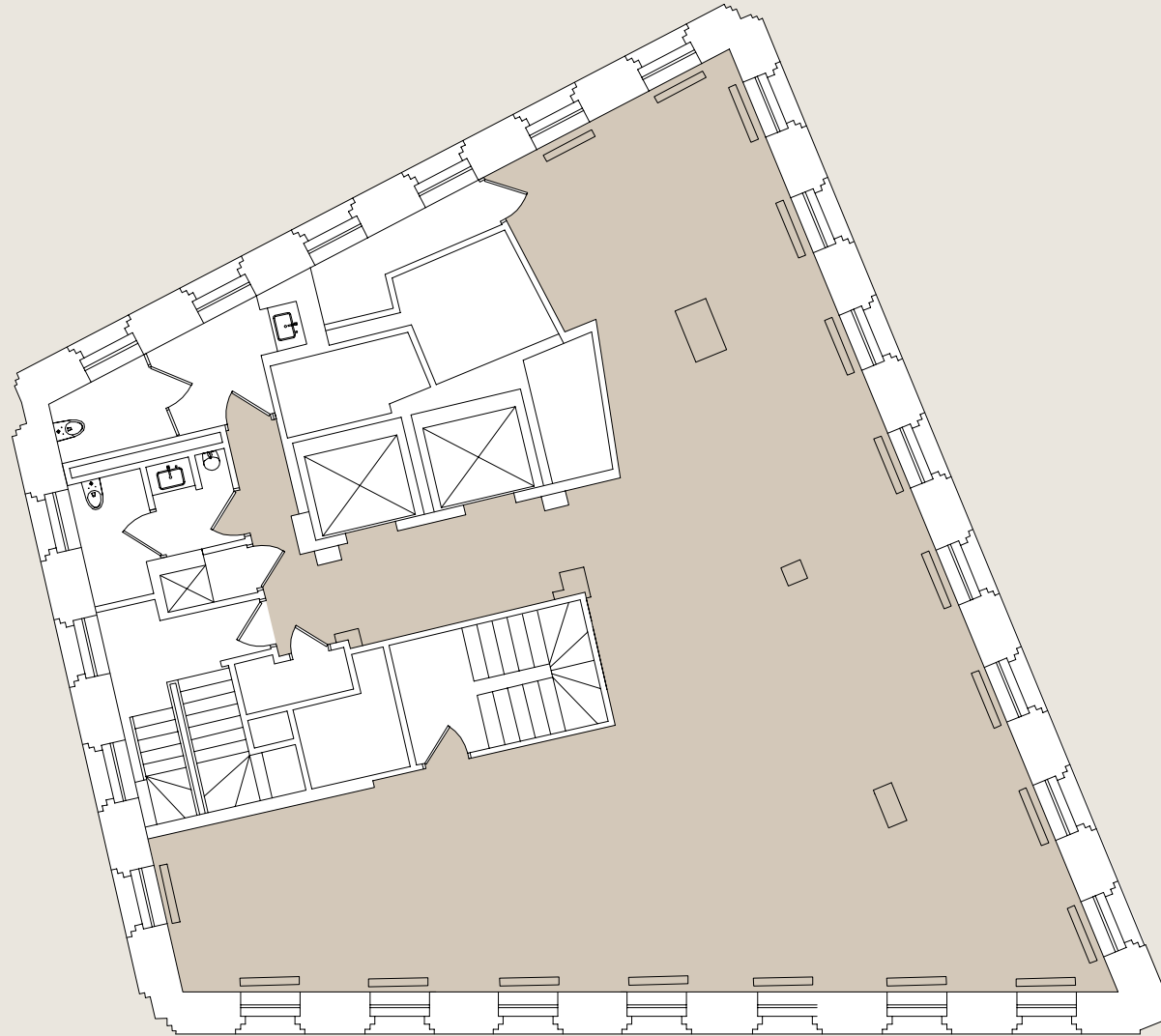
4,114 RSF

Thomas D. Ashe | +1 617 204 4112 | thomas.ashe@cushwake.com

Thomas O'Regan | +1 617 204 4160 | thomas.oregan@cushwake.com

Michael Joyce | +1 617 204 4102 | michael.joyce@cushwake.com

Devin Tringale | +1 617 204 4129 | devin.tringale@cushwake.com



FLOOR 23

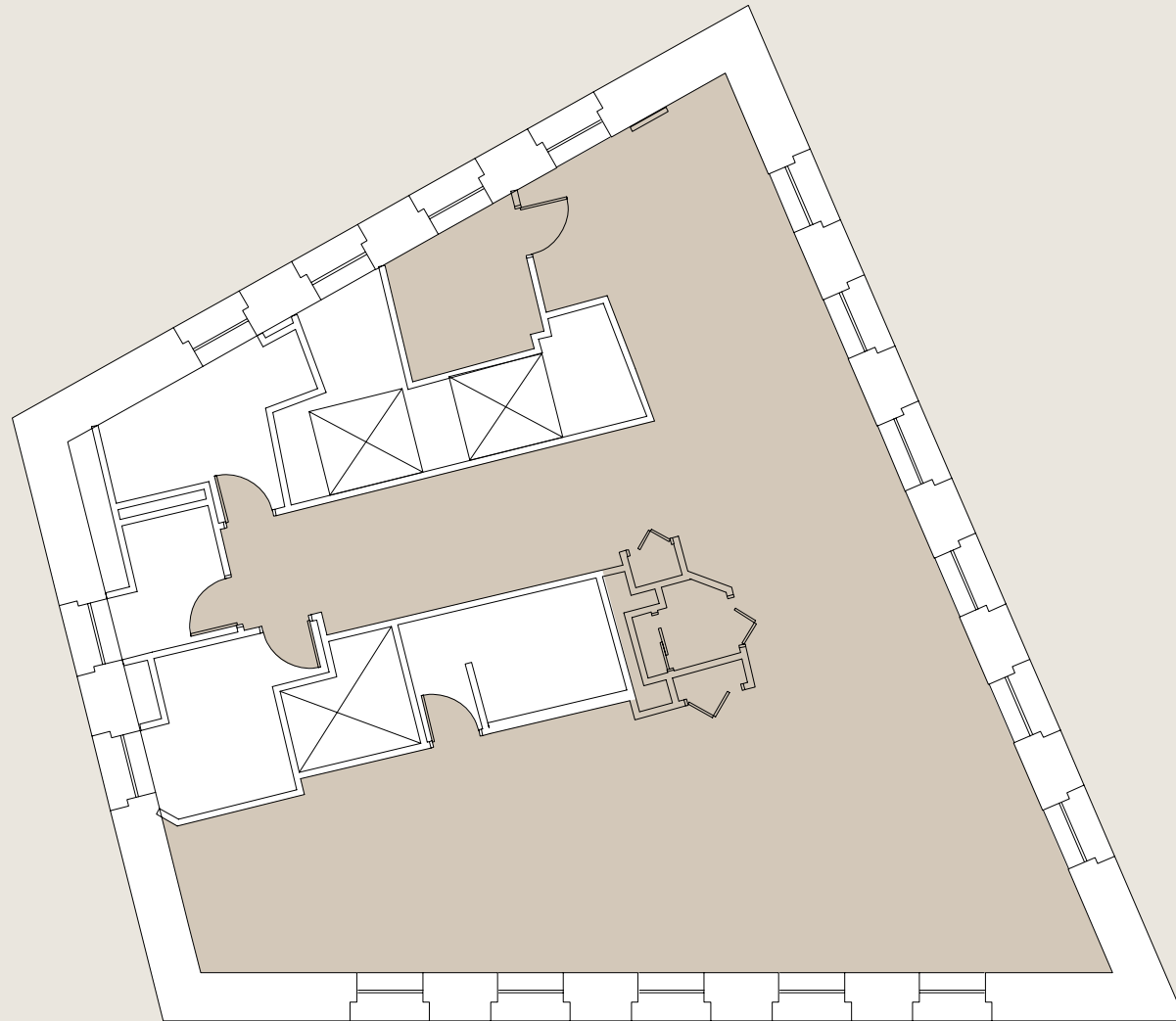
2,891 RSF

Thomas D. Ashe | +1 617 204 4112 | thomas.ashe@cushwake.com

Thomas O'Regan | +1 617 204 4160 | thomas.oregan@cushwake.com

Michael Joyce | +1 617 204 4102 | michael.joyce@cushwake.com

Devin Tringale | +1 617 204 4129 | devin.tringale@cushwake.com



FLOOR 24

2,363 RSF

Thomas D. Ashe | +1 617 204 4112 | thomas.ashe@cushwake.com

Thomas O'Regan | +1 617 204 4160 | thomas.oregan@cushwake.com

Michael Joyce | +1 617 204 4102 | michael.joyce@cushwake.com

Devin Tringale | +1 617 204 4129 | devin.tringale@cushwake.com